




Rhode Island Ocean Special Area Management Plan (SAMP)






71°50'W 71°40'W 71°30'W 71°20'W 71°10'W 71°0'W 70°50'W

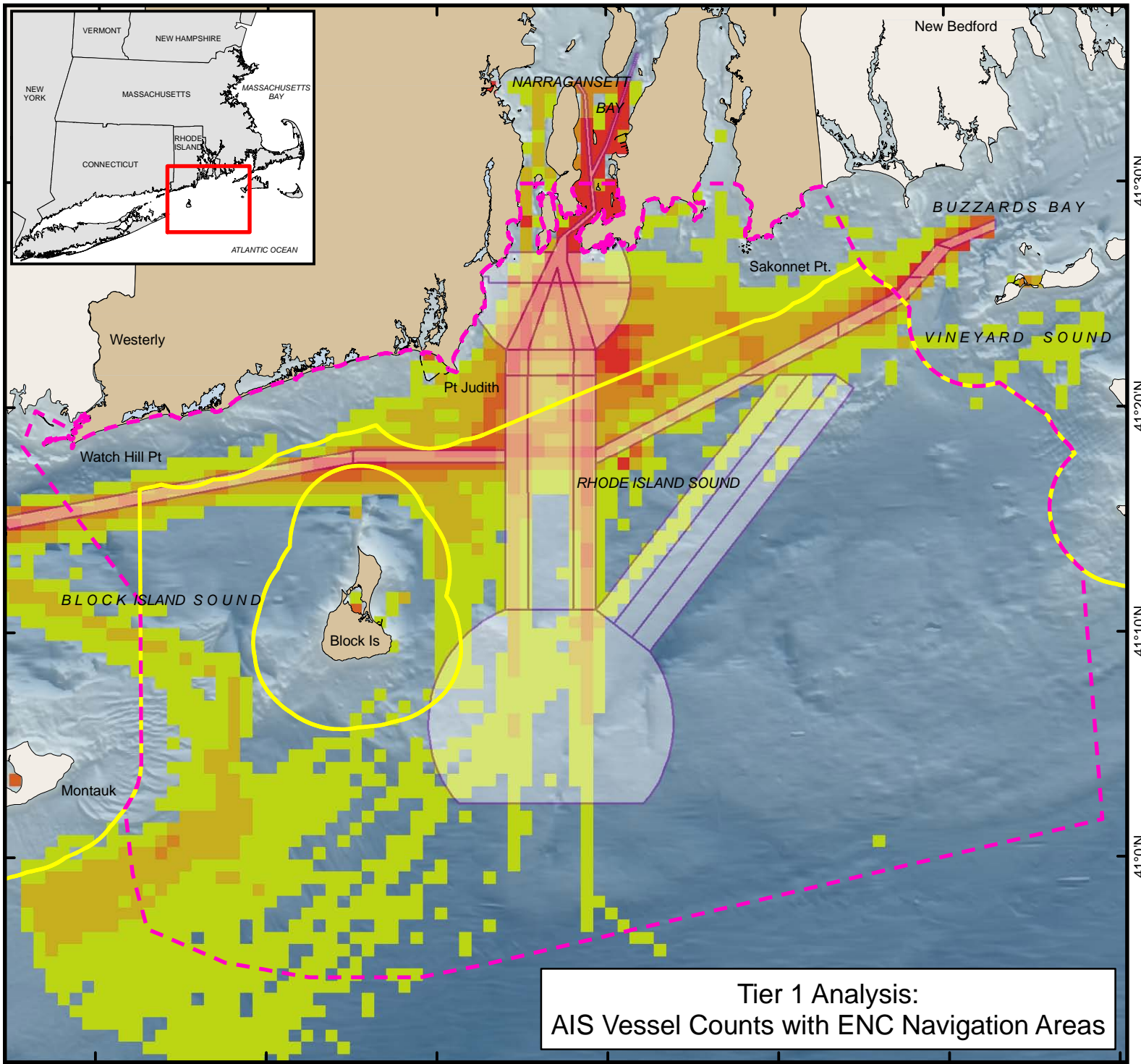
Map Key

-  OceanSAMP Study Area
-  State/Federal Waters
-  ENC Navigation Areas

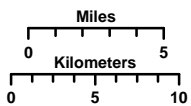
AIS Vessel Count

09/2007 - 7/2008

-  25 - 100
-  100 - 250
-  250 - 500
-  500 - 1000
-  > 1000



41°30'N
41°20'N
41°10'N
41°0'N



Coordinate System:
Projection: RI Stateplane
Units: Feet
FIPS Zone: 3800
Datum: NAD83

For Project Background Information:
<http://seagrant.gso.uri.edu/oceansamp>

For Project Map and Data Products:
http://www.narrabay.org/d_projects/oceansamp

**Tier 1 Analysis:
AIS Vessel Counts with ENC Navigation Areas**

